



# Lose weight with Orbera,

## #1 Weight Loss Balloons



The Orbera® fills the gap between the non-surgical weight loss segment and the weight loss surgery segment, allowing you to do more for your patients who require more than drug therapy and dietary advice.

Non-surgical

FDA-approved

Non-permanent

Proven to be safe

Non-invasive

Proven to be effective

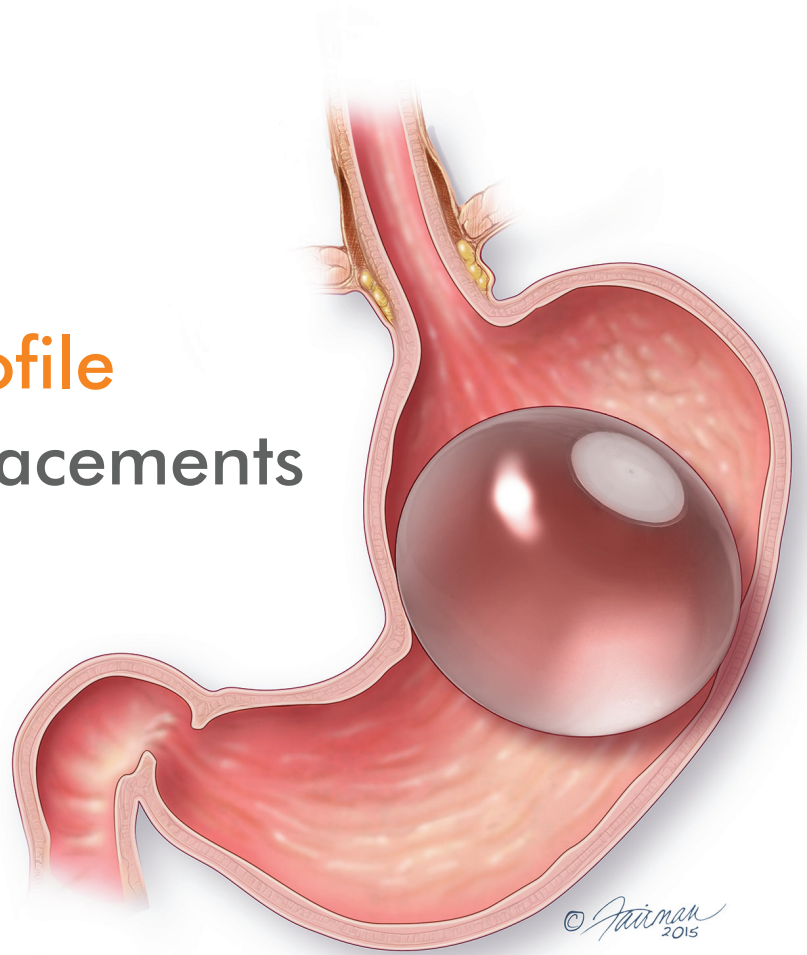
No incisions

Proven results

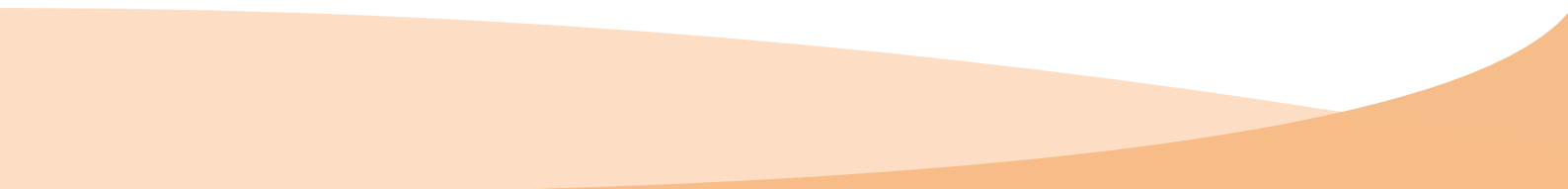


**Established safety profile  
 with over 300,000 placements  
 globally.**

The Orbera<sup>®</sup> balloon was originally designed by a group of international physicians, who identified features of an ideal intragastric balloon effective in producing weight loss:



- Spherical shape with a smooth, soft surface to reduce chance of ulcers
- Filled with sterile saline rather than air to fill the stomach and reinforce portion control
- May be filled to a volume of 400-700cc
- Radiopaque valve to support visualization within the stomach
- 2 options available, see more info below



Code	Description	Other Specifications
B-50012	Orbera365 <sup>™</sup> Intragastric Balloon System	Last inside the patients upto 365 days
B-40800	Sistema Bioenterics Intragastric Balloon (BIB <sup>™</sup> )	Last inside the patients upto 6 months



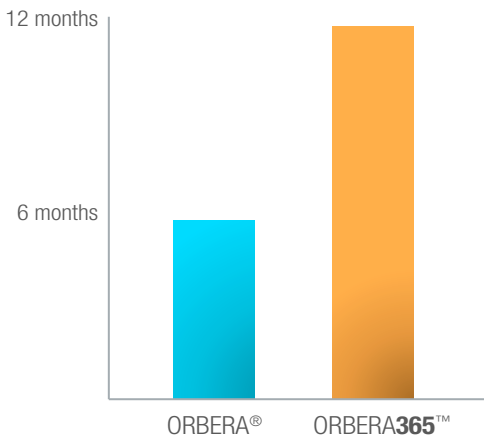
ORBERA<sup>®</sup> has helped many patients around the world lose stubborn pounds. Now with ORBERA<sup>365</sup><sup>™</sup>, patients have up to 12 months with their intragastric balloon to reduce the risk of weight regain and achieve their weight loss goals.

The #1 weight loss balloon **#1** + **365** Now indicated for up to 12 months

**Maintain Weight Loss**

ORBERA<sup>365</sup><sup>™</sup> may help maintain weight loss with longer therapy

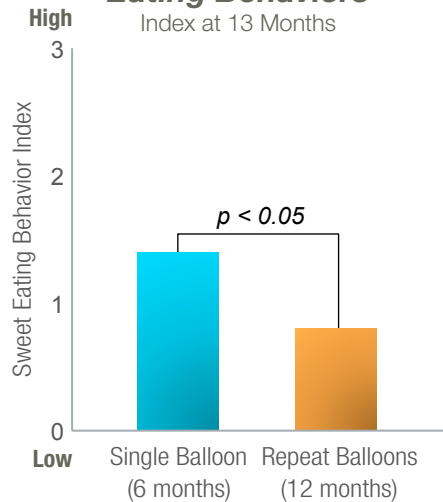
**Maximum Time with Balloon**



**Change Behavior**

ORBERA<sup>365</sup><sup>™</sup> may help patients with stubborn habits

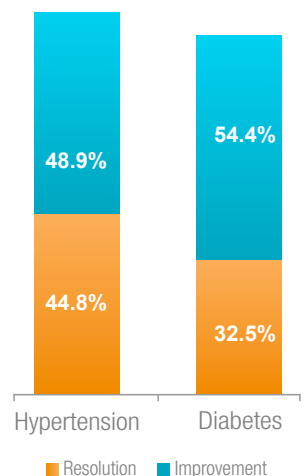
**Improvement in Sweet Eating Behaviors**



**Impact Co-morbidities**

ORBERA<sup>®</sup> has been shown to have a significant impact to co-morbidities

**Co-morbidity**

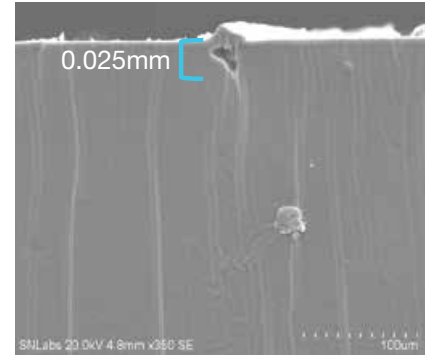


Designed and tested to provide patients with up to 12 months of support.

**Proven Shell Durability**

After 10-16 month there was little impact to shell integrity

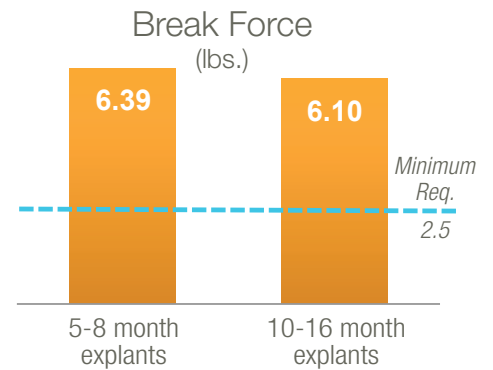
Small surface defects  
 <5% of shell thickness



Cross-Section, 350X

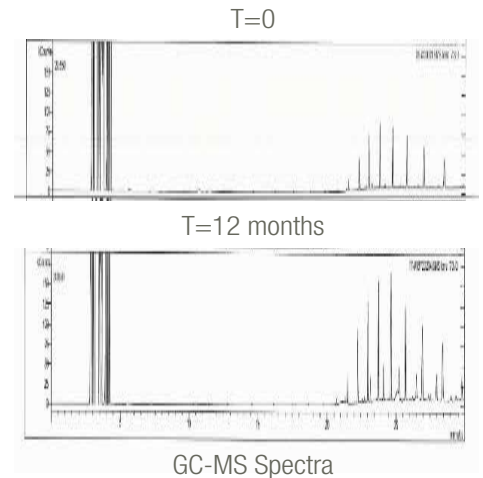
**Long-Lasting Shell Strength**

No significant degradation of mechanical properties: Break Force, Tear Strength



**High Quality Silicone**

No apparent breakdown of the silicone polymer. The lengths of the polymer chains show no change after 12 months



Built from experience:

**20+**  
years experience

**277,000+**  
distributed

**230+**  
published studies





# Improved design. Improved packaging.

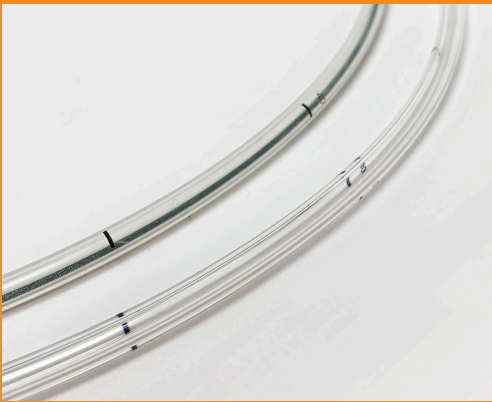
Apollo Endosurgery continues to invest in the products we bring to market. We constantly strive to improve their usability and effectiveness.

We are excited to announce a series of improvements to our line of intragastric balloons. These improvements are evident in the new packaging and are designed to make the placement of the devices easier.



## IMPROVED "PUSH-ABILITY"

New polyurethane catheter eliminates the need for the guide wire and reduces friction.



## NARROWER CROSSING PROFILE

New tighter sheath encapsulates the balloons and results in a narrower profile. Designed for smoother placement.



## NEW PACKAGING

New and improved packaging to ensure the device remains aseptic until placement.



# Look for the new boxes that include these latest features.

## Improved design. Improved packaging.

Apollo Endosurgery continues to invest in the products we bring to market. We constantly strive to improve their usability and effectiveness.

We are excited to announce a series of improvements to our line of intragastric balloons. These improvements are evident in the new packaging and are designed to make the placement of the devices easier.



### IMPROVED “PUSH-ABILITY”

New polyurethane catheter eliminates the need for the guide wire and reduces friction.



### NARROWER CROSSING PROFILE

New tighter sheath encapsulates the balloons and results in a narrower profile. Designed for smoother placement.



### NEW PACKAGING

New and improved packaging to ensure the device remains aseptic until placement.



**Look for the new  
boxes that include  
these latest features.**