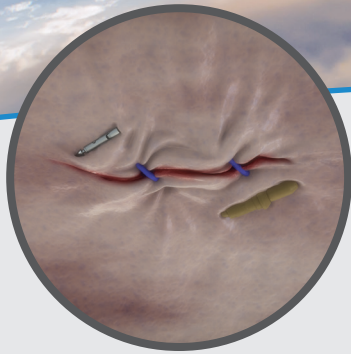
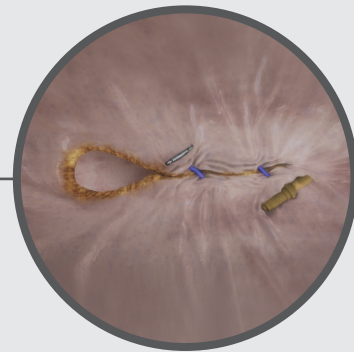


OverStitch Sx™

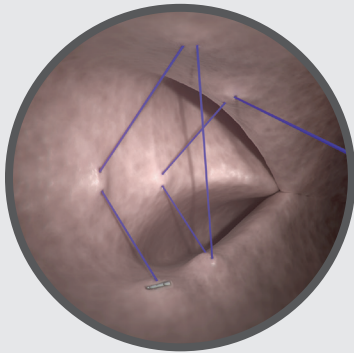
Endoscopic Suturing System



Defect Closures



Outlet Revision



Large Area Tissue
Approximation

THE LEADER

IN SINGLE-CHANNEL FULL THICKNESS SUTURING

Be a leader in bariatric and gastrointestinal procedures.

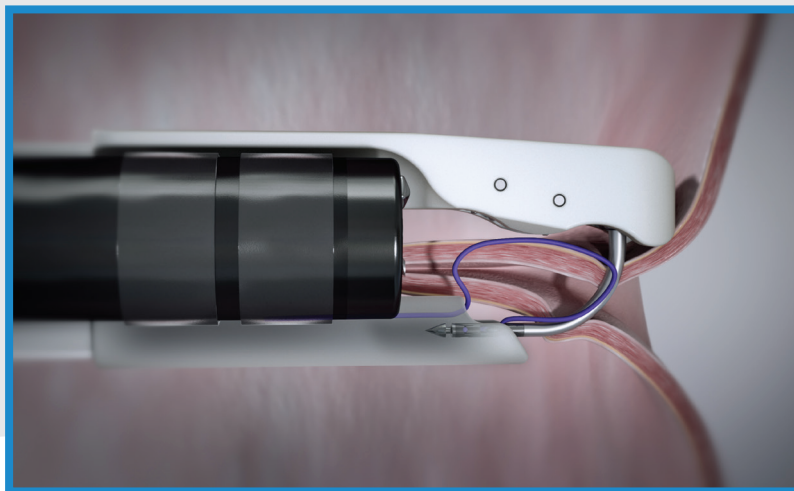
OverStitch Sx™

Endoscopic Suturing System

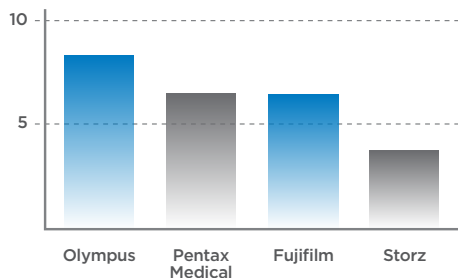
Complete your treatment options without the constraints of defect size, construct stability, or endoscope availability.

Compatible with over 20 single-channel flexible endoscopes and 4 platforms, OverStitch Sx enables advanced endoluminal closure by allowing physicians to place full-thickness sutures, while the surgical site is clearly visible to the physicians.

With the ability to customize suture patterns, OverStitch Sx allows for a broad range of treatment options for endoscopic procedures.

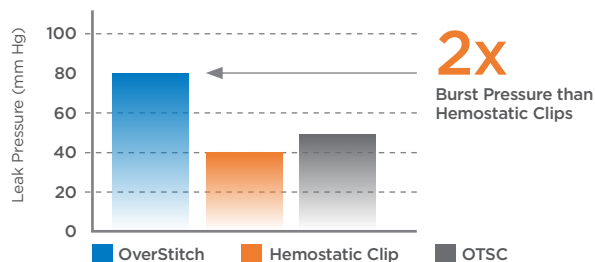


Compatible Single Channel Scopes



Compatible with over 20 single-channel flexible endoscopes and 4 platforms

Endoluminal Leak Pressure*



Treat larger defects without compromising construct stability

CODE	DESCRIPTION	QTY. PER BOX
ESS-G02-Sx1	OverStitch™ Sx Endoscopic Suturing System	3 units
PLY-G02-020-APL	OverStitch™ 2-0 Polypropylene Suture	12 units
PDO-G02-020	OverStitch™ 2-0 Polydioxanone Suture	12 units
CNH-G01-000	OverStitch™ Suture Cinch	6 units
THX-165-028	OverStitch™ Tissue Helix	6 units
OVT-027-160	OverTube™ Endoscopic Access System	3 units



To learn more about OverStitch Sx visit:
OverStitch.com

OverStitch Sx (TM) is a trademark of Apollo Endosurgery, Inc. Copyright (C)2018 Apollo Endosurgery, Inc. All rights reserved. Caution: Federal law (USA) restricts this device to sale by or on the order of a physician. The Apollo Endosurgery Sx (TM) Endoscopic Suture System is intended for endoscopic placement of suture(s) and approximation of soft tissue. Data on file at Apollo. All other trademark terms are property of their respective owners.

MKT-01227-00R01